

# Infrared camera mounting stand



## Key features

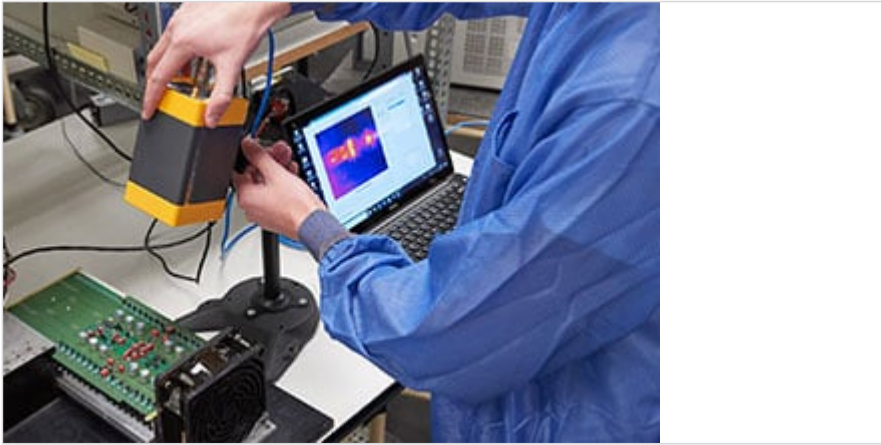
- Compatible with RSE300 and RSE600 Infrared Cameras

## Product overview: Infrared camera mounting stand

Strategically mount an infrared camera to your workstation for continuous data collection. This easy-to-adjust mounting bracket allows you to change your viewpoint by moving the bracket up, down, or around. Rule out anomalies created by infrared images captured from different angles or perspectives by maintaining a stationary position to ensure a steady stream of accurate thermal data.

Compatible with RSE300 and RSE600 Infrared Cameras.

## Ordering information



### **Infrared Camera Mounting Stand**

Infrared Camera Mounting Stand for RSE300, RSE600

---



**Fluke.** *Keeping your world up and running.®*

**Fluke Corporation**  
PO Box 9090, Everett, WA 98206 U.S.A.

**For more information call:**  
In the U.S.A. (800) 443-5853  
In Canada (800) 36-FLUKE  
From other countries +1 (425) 446-5500  
[www.fluke.com](http://www.fluke.com)

©2021 Fluke Corporation.  
Specifications subject to change without notice.  
11/2021

**Modification of this document is not permitted  
without written permission from Fluke Corporation.**