

Fluke CV200 ClirVu® 50 mm (2 in) Infrared Window



Key features

Installs and grounds in less than 5 minutes

Save time with quick and easy installation with the CV Series – 5 minutes or less.

- One technician
- One hole with standard Greenlee® punch
- Panel door does not need to be removed
- Grounds instantly to metal enclosure with patent-pending AutoGround™ process
- Maintains panel arc test ratings up to 63kA when properly installed

Work more efficiently with Fluke ClirVu® CV200 50 mm (2 in) Infrared Windows

- NFPA 70E processes significantly reduced due to less work permit requirements
- Faster and more comfortable inspections because full PPE is often not required
- Reduce the risk of arc-flash and electrocution, increase the safety of your personnel and reduce the time and cost of preventive maintenance
- CV200 is Torture Tested™ to the highest arc blast test ratings IEEE C37.20.7: 63 kA Arc tested at KEMA, UL 50/50E/50V, UL1558, IEC60529-1: IP67, IEC 60068, NEMA 4/12, CSA C22.2 NO. 14-13:2012, and CE
- Convenience of both quick turn or security keyed access

Product overview: Fluke CV200 ClirVu® 50 mm (2 in) Infrared Window

A company's greatest investment is not the equipment that's behind the panel door; top priority is to offer the ultimate protection for the electricians, engineers and inspectors who risk their lives every day doing their jobs.

The ClirVu® coating - exclusive to Fluke infrared windows - seals the optic prior to assembly to protect against moisture degradation making it perfect for very hot and very cold environments.

Each Fluke infrared window is delivered with an identification plate attached for unique, on-site numbering for rapid location confirmation and faster repairs.

For a security key access option see the CV201 IR Window.

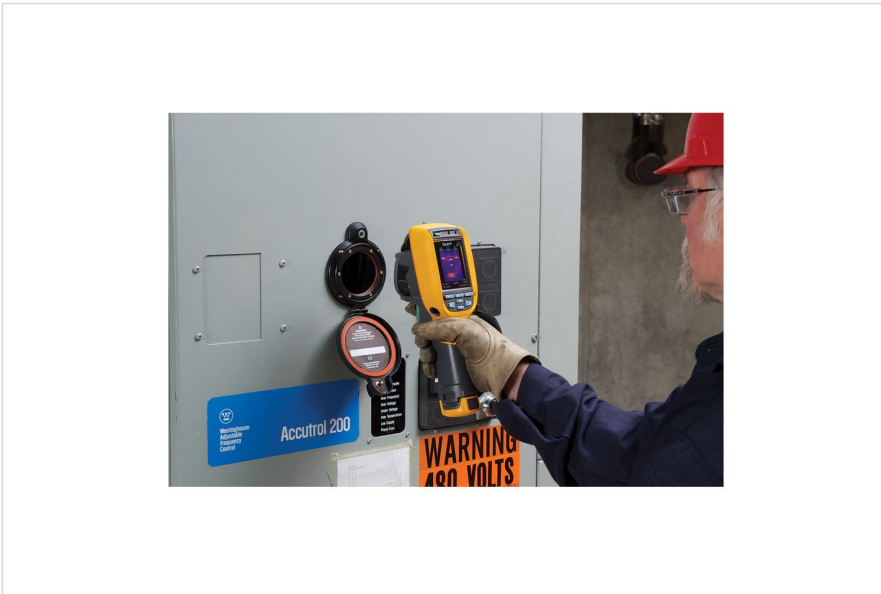
The CV Series of infrared windows are also available in 75 mm (3 in) and 95 mm (4 in) sizes.

Specifications: Fluke CV200 ClirVu® 50 mm (2 in) Infrared Window

| General Specifications | |
|---|--|
| Size | 50 mm (2 in) |
| Voltage range | Any |
| NEMA environment type | Type 4/12 (indoor/outdoor) |
| AutoGround™ | Yes |
| ClirVu® optic | Yes |
| Operating temperature | -40°C to +232°C (-40° F to +450°F) and +260°C (500°F) intermittent |
| Compatible with all Fluke cameras | Yes |
| Jam nut locking system | Yes |
| Cover and fastener permanently attached | Yes |
| Single-hole install | Yes |
| Hand turn and security key door latch options | Yes |
| Visual inspection and fusion capable | Yes |
| Short/Mid/Long-wave IR and UV capable | Yes |
| Ratings and Testing | |
| Arc-tested (IEEE C37.20.7) | 63 kA for 30 cycles @ 60 Hz at KEMA |
| UL 50 /NEMA environmental rating | NEMA Type 4/12 |
| UL1558 | Yes |
| CSA C22.2 No. | Yes |
| CSA type rating | Type 4 |
| IP rating | IP67 at TUV |

| | |
|--|--|
| Lloyds register | Up to 11 kV marine switchgear, indoor or outdoor (offshore only) |
| Vibration rating | IEC60068-2-6 at TUV |
| Humidity rating | IEC60068-2-3 at TUV |
| Install | |
| Actual mounting hole diameter required | 61.37 mm (2.416 in) |
| Greenlee® punch kit = punch/die | 76BB = 441AV/442AV |
| Recommended max panel thickness | 10 gage |
| Overall window height | 112.9 mm (4.45 in) |
| Overall window width | 83.0 mm (3.27 in) |
| Overall window thickness | 16.2 mm (0.64 in) |
| Door latch | Hand Turn |
| Optics | |
| Optic insert diameter | 50 mm (1.97 in) |
| Viewing aperture diameter | 42.93 mm (1.690 in) |
| Viewing aperture area | 1445 mm ² (2.24 in ²) |
| Thickness | 2 mm (0.08 in) |
| Other | |
| Warranty | Lifetime replacement against manufacturing defects |

Ordering information



Fluke CV200

Fluke CV200 ClirVu® 50 mm (2 in) Infrared Window

Includes:

- 2 in (50 mm) IR Window
- Hand turn door latch
- Warranty statement
- Fluke IR Windows are complete, assembled and ready for installation

Fluke. *Keeping your world up and running.®*

Fluke Corporation
PO Box 9090, Everett, WA 98206 U.S.A.

For more information call:
In the U.S.A. (800) 443-5853
In Europe/M-East/Africa +31 (0)40 267 5100
In Canada (800)-36-FLUKE
From other countries +1 (425) 446-5500

Fluke Electronics (Malaysia) Sdn Bhd
Suite D-3A-4, Block D
SouthGage Commercial Centre, No2
Jalan Dua Off Jln Chan Sow Lin
55200 KL
Malaysia
Email: info.asean@fluke.com
www.fluke.com/my

©2021 Fluke Corporation. Specifications subject to
change without notice.
12/2021

**Modification of this document is not permitted
without written permission from Fluke Corporation.**