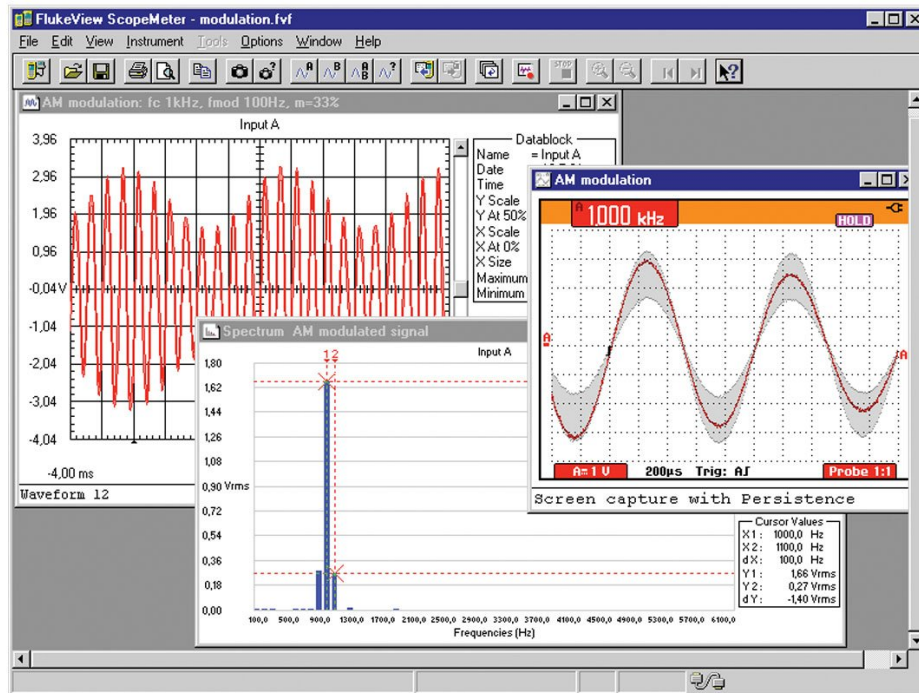


Fluke SW90W FlukeView ScopeMeter Software



Key features

- For ScopeMeter 190 and 120 Series
- Windows XP/Vista/Win-7
- Requires one free RS-232 port (COM port) or a free USB-Port
- Requires optional PM9080 RS-232 Adapter/Cable or a optional OC4USB-cable (190C-series, 120-series)

Note: 190-series II comes with USB-port and USB-cable included. For 190-II no additional hardware is required.

Product overview: Fluke SW90W FlukeView ScopeMeter Software

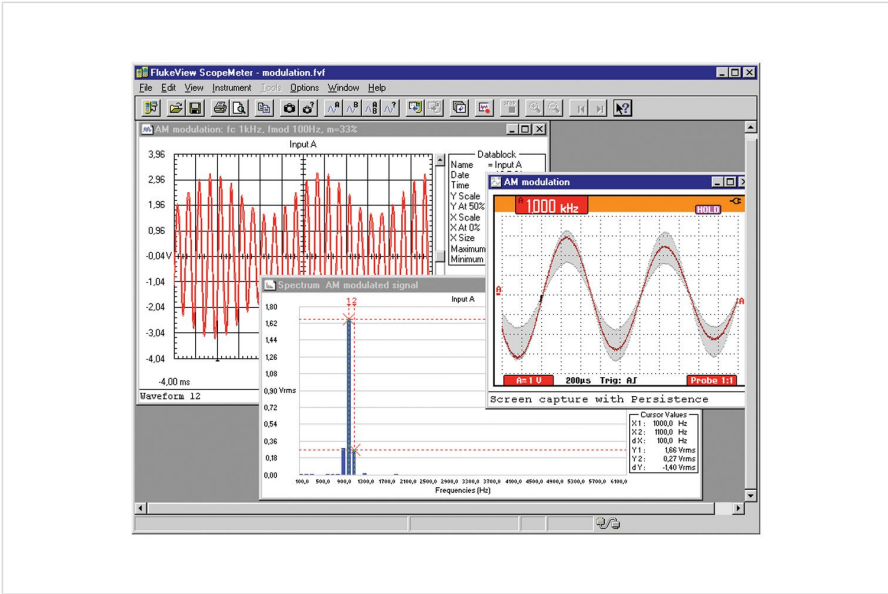
FlukeView software adds PC power to your Fluke ScopeMeter test tool

FlukeView ScopeMeter software helps you get more out of your [ScopeMeter Test Tool](#) by:

- **Documenting:** Transfer screens, waveforms, and measurement data from the ScopeMeter to your PC for printing, or to import data to other programs.
- **Archiving:** Store and retrieve waveforms with text annotations and create your own library for easy reference and comparison.
- **Analysis:** Gather valuable measurement data and enable cursor measurement to reveal relationship and conditions.

Extended recording of up to four user-selected measurements help you monitor and analyze slow moving signals and related events. Upload waveforms to the PC and use cursors for detailed measurements. Perform waveform analysis, including analyzing harmonics.

Ordering information



Fluke SW90W

Fluke. *Keeping your world up and running.®*

Fluke Corporation
PO Box 9090, Everett, WA 98206 U.S.A.

For more information call:
In the U.S.A. (800) 443-5853
In Europe/M-East/Africa +31 (0)40 267 5100
In Canada (800)-36-FLUKE
From other countries +1 (425) 446-5500

Fluke Electronics (Malaysia) Sdn Bhd
Suite D-3A-4, Block D
SouthGage Commercial Centre, No2
Jalan Dua Off Jln Chan Sow Lin
55200 KL
Malaysia
Email: info.asean@fluke.com
www.fluke.com/my
©2021 Fluke Corporation. Specifications subject to
change without notice.
12/2021

**Modification of this document is not permitted
without written permission from Fluke Corporation.**