

25* Micron Macro Infrared Smart Lens



Key features

- Avoid the hassle of sending in your camera to calibrate with the lens - with smart lenses you can just attach the lens to any compatible camera and start taking images.
- With this lens, there's no need to move the focus wheel the precise amount to get optimal focus. With your lens attached, use LaserSharp® Auto Focus to set the focus, then position the camera and target within the working distance of the lens (~8 to ~14 mm).
- Made of 100% diamond-turned germanium with an engineered coating, the most efficient available material to transmit energy to the detector.
- Use the tripod mount thread on the TiX560, TiX520, or TiX500 to attach the camera to a bench-top mounting system to ensure it remains stable and motionless while capturing images. The TiX560 also includes a remote control feature so you can capture images from your computer while the camera remains undisturbed. (Remote control not available with TiX520.)

Product overview: 25* Micron Macro Infrared Smart Lens

Get an incredibly detailed image of very small objects so you can gain insight into thermal buildup and dissipation on printed circuit boards, identify a faulty or undersized component, or potentially even pinpoint precise faulty locations on those components. See details as small as 25 microns, which is smaller than the average human hair.

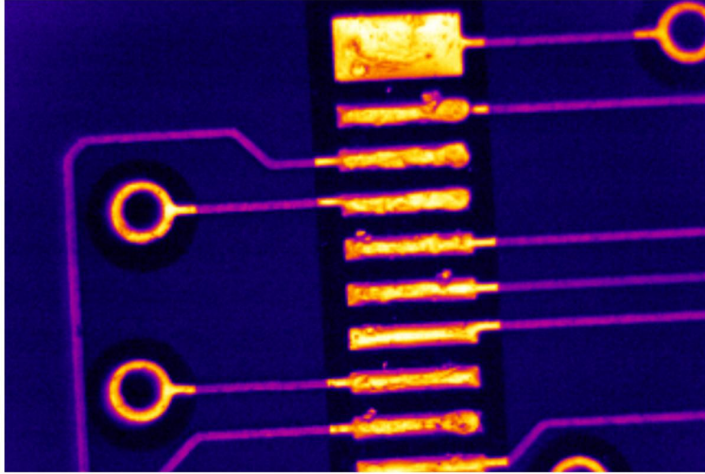
Compatible with TiX580, TiX560, TiX520 and TiX500.

*When used with a TiX580 this resolves to 18 microns.

Specifications: 25* Micron Macro Infrared Smart Lens

Description	
Object size	7.8 mm x 5.8 mm
Focus distance	10.4 mm +/- 1 mm (0.4 in)

Ordering information



FLK-LENS/25MAC2

25 Micron Macro Infrared Smart Lens
For use with the TiX560 and TiX520 Infrared Cameras.

Fluke. *Keeping your world up and running.®*

Fluke Corporation

PO Box 9090, Everett, WA 98206 U.S.A.

For more information call:

In the U.S.A. (800) 443-5853

In Europe/M-East/Africa +31 (0)40 267 5100

In Canada (800)-36-FLUKE

From other countries +1 (425) 446-5500

Fluke Electronics (Malaysia) Sdn Bhd

Suite D-3A-4, Block D

SouthGage Commercial Centre, No2

Jalan Dua Off Jln Chan Sow Lin

55200 KL

Malaysia

Email: info.asean@fluke.com

www.fluke.com/my

©2021 Fluke Corporation. Specifications subject to change without notice.

11/2021

Modification of this document is not permitted without written permission from Fluke Corporation.