

TECHNICAL DATA

Fluke TiX620 Infrared Camera



Key features

- 640 x 480 resolution infrared camera with advanced focus and a large 5.6 inch high resolution LCD screen
- Features 32x on-camera digital zoom to allow you to get close up shots from a safe distance
- Offers multiple image transfer protocols
- Provides the sharpest ever IR-Fusion® images with an 8 MP visible light camera
- Subject to Export Control

Product overview: Fluke TiX620 Infrared Camera

Fluke TiX620 delivers crisp, clear thermal images with 640 x 480 resolution at an affordable price

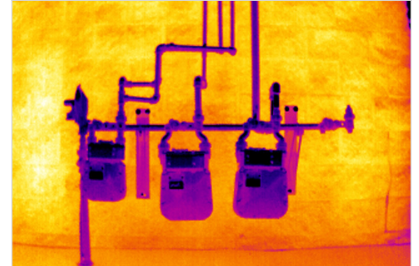
With the Fluke TiX620 you can conduct inspections from a safe distance and still get spectacular, detailed infrared images with the 32x on-camera digital zoom. You can see more detail in every image on the large 5.6 inch high resolution LCD screen and get high measurement accuracy and precision images with 640 x 480 resolution.

Save time focusing

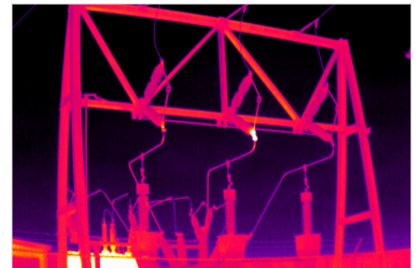
The TiX620 can save you time focusing with advanced auto focus and manual focus. And you can take focus to the extreme and eliminate out of focus images with EverSharp multifocal recording that takes a stack of IR Images at one time and combines them into one fully focused image.

You can also collect data in real-time with LabVIEW® and Matlab® toolboxes, and capture high quality radiometric images and videos.

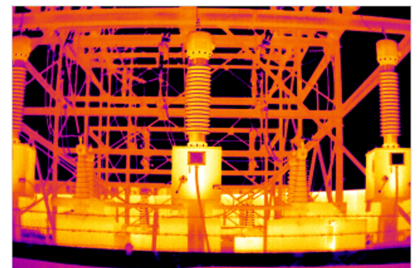
Other useful features:



Fluke TiX620 delivers crisp, clear thermal images with 640 x 480 resolution at an affordable price



Save time focusing



Capture high quality radiometric images and videos

- Offers versatile viewing options for in-field viewing of images with viewfinder for outdoor use.
 - Provides temperature measurements from -40 to 600 °C (-40 to 1112°F)
 - Enables quick and easy in-field analysis with IR-Fusion® blending technology and advanced touchscreen functions including continuous level and span adjustment and filter mode for improved thermal sensitivity
 - Provides 4x the pixel data with SuperResolution to create a 1280 x 960 resolution image (in software)
 - Features light and ergonomic handling with neck and hand strap for all day use
- Offers user defined programmable buttons to personalize for quick access to most used features.

Specifications: Fluke TiX620 Infrared Camera

Image Quality	
IFOV (spatial resolution)	0.85 mRad
Image resolution (pixel)	640 x 480 (307,200 pixels)
Frame rate (@ max. image resolution)	30 and 9 Hz
SuperResolution & Dynamic SuperResolution (resolution enhancement)	No
Subwindowing modes available - subwindowing options are not available on 9 Hz models: (add on at time of order)	Option 1: 384 x 288
Field of View (FOV) w/standard 30mm lens	32.7° x 24.0°
Thermal sensitivity (NETD)	< 0.04°C at 30°C target temp (40 mK)
Spectral range	7.5 µm to 14 µm
IR-Fusion® Technology	
AutoBlend™ mode	Yes
Viewing modes	Picture-in-picture, continuous blending, color alarms (above and below user defined temperatures)
Focus System	
LaserSharp® Auto Focus	No
Auto focus	Yes
Manual focus	Yes, with the touch of a finger for tighter views
EverSharp multifocal recording	Yes, Multifocal recording captures images from different focal distances and combines them into one image displaying each object sharply for the best image quality
Temperature Measurement	
Range	-40 °C to 600 °C (-40 °F to 1112 °F)

Accuracy	± 2 K or ± 2 %	
Correction functions	Emissivity (manual or material table)	
	Transmissivity, ambient temperature, humidity (option)	
Data Storage and Image Capture		
Image/video storage	SDHC memory card	
Interfaces for image/data transfer	Supported in camera data ports: Image transfer, SD card, USB 2.0, video output DVI-D (HDMI). GigE vision and RS232	
	Supported in SmartView® Software: SD Card	
General Specifications		
Laser pointer	Yes, laser class: 2	
Laser distance meter	Yes	
Display	Extra-large 5.6" color TFT display, 1280 × 800 pixel resolution, Suitable for daylight operation	
Geo-localization	Built-in GPS for geo-referencing	
Digital visible light camera	Up to 8 megapixel resolution for image and video recording	
Digital zoom	Up to 32x digital zoom	
Text annotation	Yes	
Voice annotation	Yes	
Audio	Integrated microphone and loudspeaker for voice annotations	
A/D conversion	16 bit	
Power supply	External: 12 VDC ... 24 VDC Battery: Standard Li-Ion video camera battery	
Replaceable Smart Batteries with LED level indicator	One	
Operating temperature	-25 °C to +55 °C (-13 °F to 131 °F)	
Storing temperature	-40 °C to +70 °C (-40 °F to 158 °F)	
Humidity	Relative humidity 10 % to 95 %, non-condensing	
Shock	Operational: 25G, IEC 68-2-27	
Vibration	Operational: 2G, IEC 68-2-6	
Protection class	IP54	
Ergonomics	Camcorder	
Viewfinder	None	
Dimensions (with standard 1.0/20 mm lens)	206mm x 125mm x 139mm (8.1 in x 4.9 in x 5.5 in)	



Weight (with standard 30 mm lens)	1.5 kg (3.3 lb)
Measurement functions (selection)	Multiple measurement spots and Regions of Interest, hot/cold spot detection, isotherms, differences
Automatic functions (selection)	Focus, image, level, range, NUC, lens recognition, image optimization, alarm sequence
SmartView® software	Yes
Supported languages	Czech, Dutch, English, Finnish, French, German, Hungarian, Italian, Japanese, Korean, Polish, Portuguese, Russian, Simplified Chinese, Spanish, Swedish, Traditional Chinese and Turkish
Warranty	2 years

Ordering information



FLK-TiX620 30 Hz

Fluke TiX620 Infrared Camera 30 Hz

Includes:

- One rechargeable battery
- Battery charger and adapter
- AC adapter
- SD card reader
- Protective lens cap
- Hand and neck straps
- Carrying case
- Warranty card and safety instructions
- Calibration certificate

FLK-TiX620 9 Hz

Fluke TiX620 Infrared Camera 9 Hz

Includes:

- One rechargeable battery
- Battery charger and adapter
- AC adapter
- SD card reader
- Protective lens cap
- Hand and neck straps
- Carrying case
- Warranty card and safety instructions
- Calibration certificate

Fluke. *Keeping your world up and running.®*

Fluke Corporation
PO Box 9090, Everett, WA 98206 U.S.A.

For more information call:
In the U.S.A. (800) 443-5853
In Canada (800) 36-FLUKE
From other countries +1 (425) 446-5500
www.fluke.com

©2022 Fluke Corporation.
Specifications subject to change without notice.
01/2022

**Modification of this document is not permitted
without written permission from Fluke Corporation.**