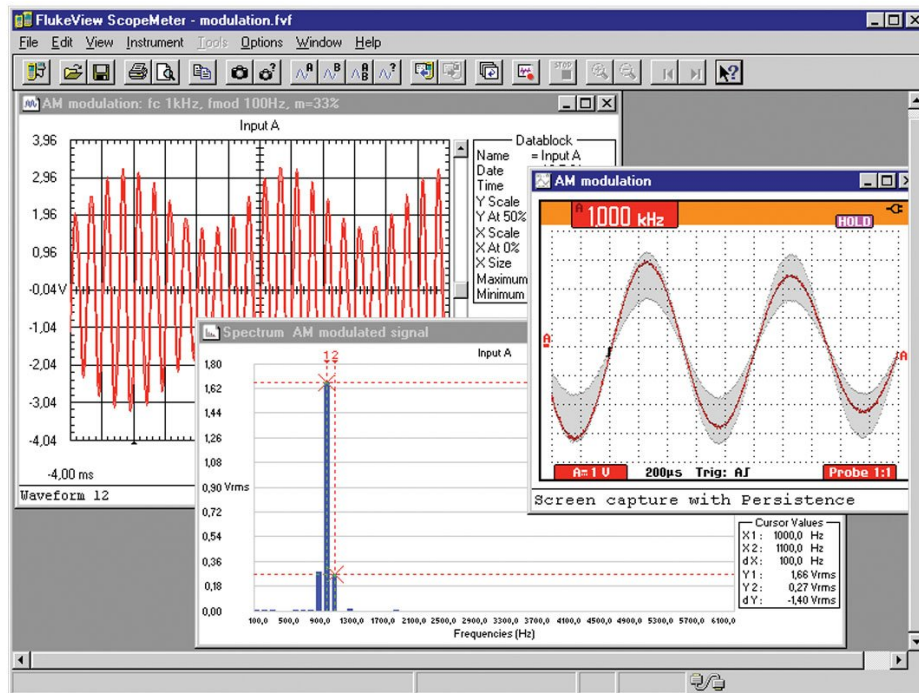


Fluke SW90W FlukeView ScopeMeter Software



Nøglefunktioner

- For ScopeMeter 190 and 120 Series
- Windows XP/Vista/Win-7
- Requires one free RS-232 port (COM port) or a free USB-Port
- Requires optional PM9080 RS-232 Adapter/Cable or a optional OC4USB-cable (190C-series, 120-series)

Note: 190-series II comes with USB-port and USB-cable included. For 190-II no additional hardware is required.

Produktoversigt: Fluke SW90W FlukeView ScopeMeter Software

FlukeView software adds PC power to your Fluke ScopeMeter test tool

FlukeView ScopeMeter software helps you get more out of your ScopeMeter Test Tool by:

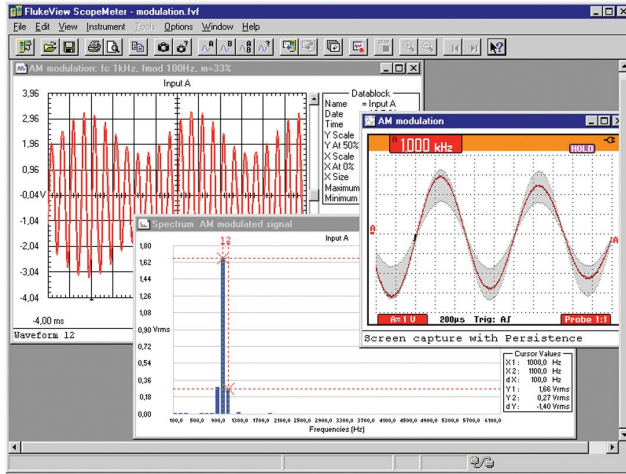
- Documenting: Transfer screens, waveforms, and measurement data from the ScopeMeter to your PC for printing, or to import data to other programs.
- Archiving: Store and retrieve waveforms with text annotations and create your own library for easy reference and comparison.
- Analysis: Gather valuable measurement data and enable cursor measurement to reveal relationship and conditions. Extended recording of up to four user-selected measurements help you monitor and analyze slow moving signals and related events. Upload waveforms to the PC and use cursors for detailed measurements. Perform waveform analysis, including analyzing harmonics.

- For ScopeMeter 190 & 120 Series
- Windows XP/Vista/Win-7

- Requires one free RS-232 port (COM port) or a free USB-Port
- Requires optional PM9080 RS-232 Adapter/Cable or a optional OC4USB-cable (190C-series, 120-series)

Note: 190-series II comes with USB-port and USB-cable included. For 190-II no additional hardware is required

Modeller



Fluke SW90W

Fluke. *Keeping your world up and running.®*

Fluke Danmark A/S
c/o Radiometer Medical ApS
Åkandevej 21
2700 Brønshøj
Danmark
Tlf.: 70 23 58 53
E-mail: cs.dk@fluke.com
www.fluke.dk

©2021 Fluke Corporation. Alle rettigheder
forbeholdes.
Oplysningerne kan ændres uden forudgående
varsel.
12/2021

**Ændringer i dette dokument er ikke tilladt uden
skriftlig tilladelse fra Fluke Corporation.**