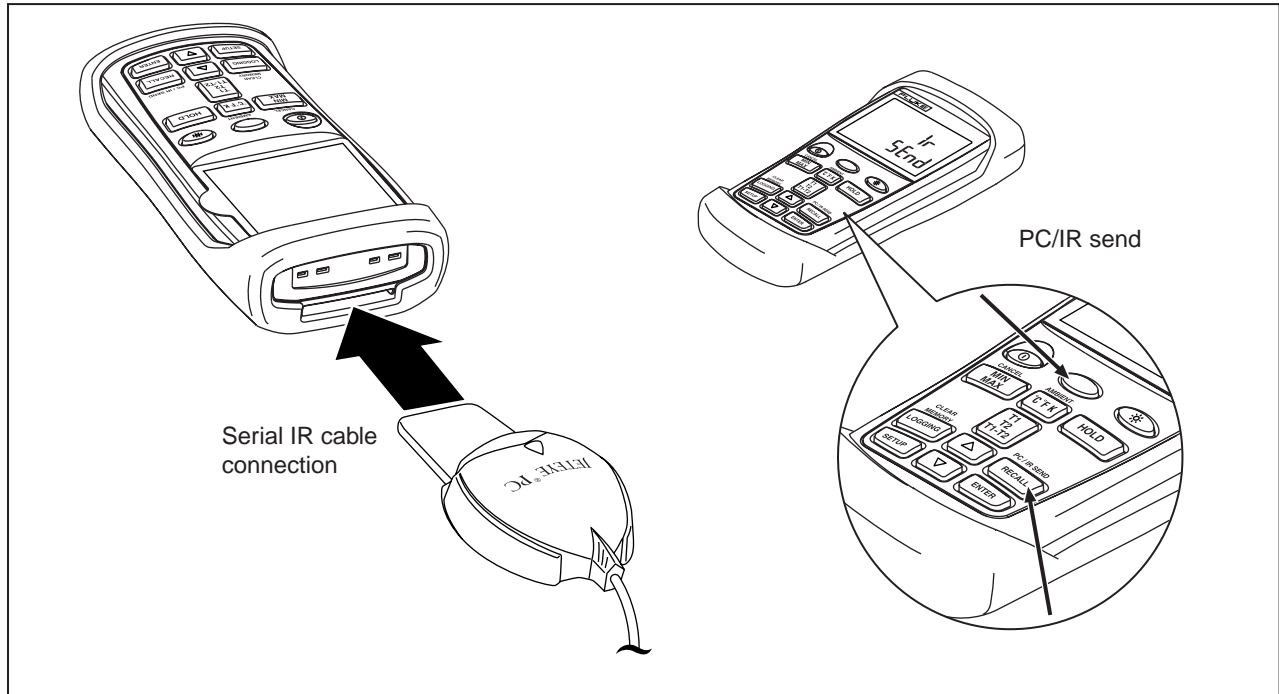


FlukeView Forms

Documenting Software

53 / 54 Meter Connection Page



zk04f.eps

To connect the 53 / 54 meters to the PC for use with *FlukeView Forms Documenting Software*:

1. Connect the IR serial cable to the serial port on the PC.
2. Place the IR device into the holster provided.
3. Insert the holster into the slot at the bottom of the meter, so that the IR device is adjacent to the top of the meter.
4. Open *FlukeView Forms Documenting Software*.
5. Turn the meter on.
6. Press the **PC/IR Send** button. To do this, press the yellow **Shift** (○) button, then press **Recall** (RECALL).
7. Follow the instructions for transferring data from the meter to the PC found in the printed *Getting Started Guide* or the online *Users Manual*.

Note

Use Fluke Part No. 1590623 if you need to order additional or replacement IR serial cables.

