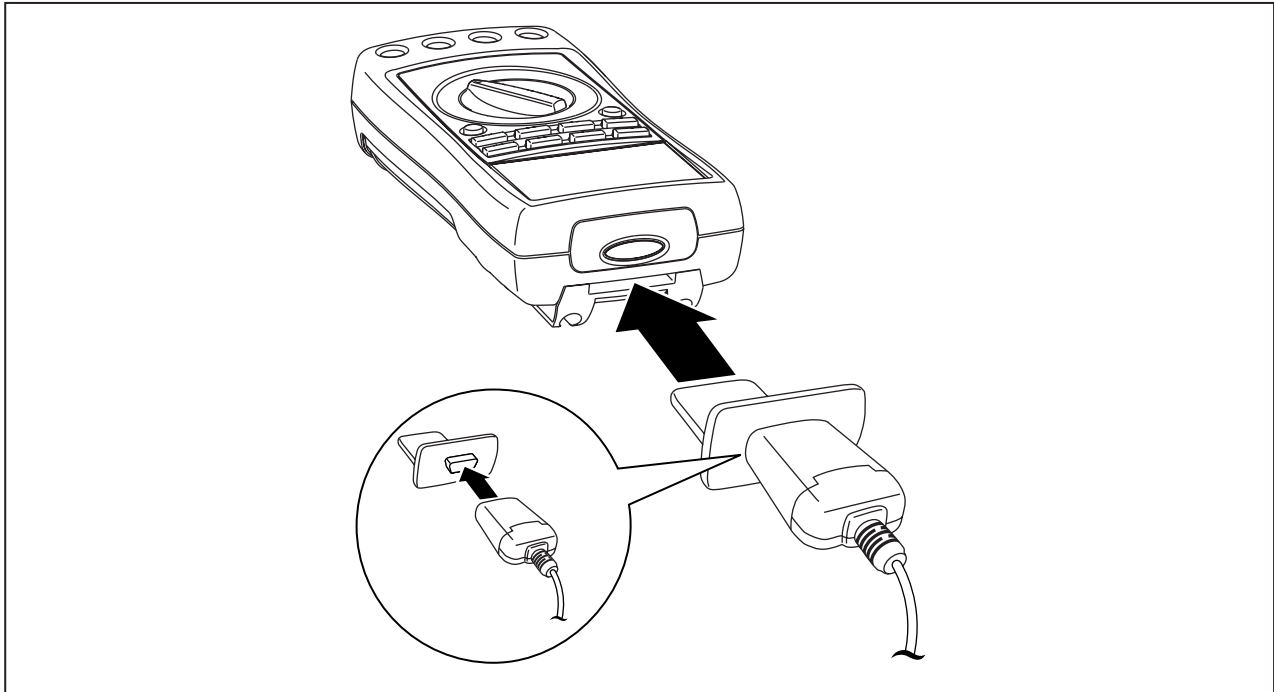


FlukeView Forms

Documenting Software

187 / 189 Meter Connection Page



zk02f.eps

To connect the 187 / 189 meters to the PC for use with *FlukeView Forms Documenting Software*:

1. Connect the IR serial cable to the serial port on the PC.
2. Connect the IR device to the adapter provided.
3. Insert the adapter into the slot at the bottom of the meter, so that the IR device is against the IR window of the meter.
4. Open *FlukeView Forms Documenting Software*.
5. Turn the meter on.
6. Follow the instructions for transferring data from the meter to the PC found in the printed *Getting Started Guide* or the online *Users Manual*.

Note

Use Fluke Part No. 1590638 if you need to order additional or replacement IR serial cables.

